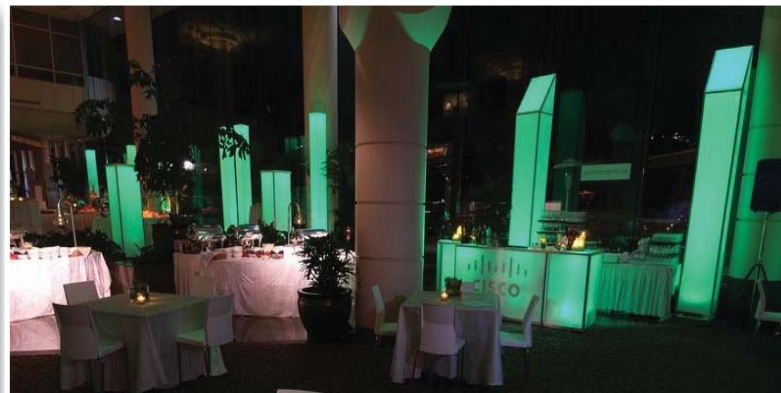


LightBoX

The LightBoX Gallery is a décor series designed to capture light and colour, creating vibrant and distinctive visual impact. Coordinate and combine easily to create dramatic focal points, immersive environments, stage sets and more. Synchronize visual identity using dynamic lighting and customized graphics. Combinations of these architectural forms and a range of drape options transform and define any venue quickly and completely. Create intimate spaces, rich perimeter treatments, or dynamic service stations; finish any stage or room with black or white velours or sheers.

An accompanying CD contains a pdf of these pages, stock images, and a gallery of past projects that show a range of applications. You may use these and the associated copy as direct sales tools. If you require additional material, original configurations, or would like custom colour or graphics rendering, please enquire and we will be happy to tailor these tools for you.



LightBoX *Products & Services*



LightBoX Pricing:

The items and combinations here are priced to make them financially accessible and easy to visualize at your event. If there is a configuration you have in mind that you don't see here, please enquire, and we will make available a scaled rendering, if not a photograph, as well as attempt to apply the same value to unique combinations as to our existing modules.

Most of these pieces are easily installed: they are available as rentals. It is our hope that our installation pricing structure makes it easy to let us deliver full service and peace of mind.

Delivery can be amortized with larger projects, and we will happily coordinate with other suppliers to reduce your trucking expenses overall.

LightBoX Labour:

We have determined a labour rate based on 25% of the rental value within this series. Our interest is in making this series accessible and systematic, so that we can streamline the sales process for our clients and deliver added production value. This, combined with the drape pricing formula, can make scaling events a snap, and relieves much of the time spent in the quote process as events take form.

A minimum of \$300.00 in rentals is required to actuate this formula, but in most cases, 2 or more pieces will meet that minimum, and we will work with you to accommodate special circumstances. *We intend to apply this strategy to the balance of our stock; it is not currently approved but under scrutiny.*

LightBoX Lighting:

We are pleased to have partnered with our suppliers to offer exceptional pricing on lighting for this series. We have limitations beyond which we will happily collaborate and coordinate with either our partners or the supplier of your choice; We will defer any show lighting, larger quantities (more than 36 fixtures), or hung lighting directly to a lighting supplier.

Some venues may require a preferred supplier, in which case we cannot guarantee this pricing.

Our preference is to use LED Colour Blasts almost exclusively, as they provide a superior effect, the lowest profile, and contribute to our Environmental Mandate. We recommend that no other fixture beyond a par 38 be used with these pieces. While they are all of materials that meet Fire & Safety standards, they can sustain damage from fixtures with higher wattage. *Damage caused by excessive heat are considered the responsibility of the client, and repairs and replacement costs will be charged accordingly.*

LightBoX Graphics:

We can produce thematic or branded content to apply to this series, using lighting and/or graphics. We will be developing stock appliques, but currently pricing for applied graphics is on a custom content basis. Quotes for graphics will be provided on a per job basis until a stock price is established for the particular print. (You may apply your own graphics to these as well. We require that they are removed entirely on site, or additional cleaning charges may be applied.)

LightBoX Stock Rentals



Flat Bar - Single: \$150.00
 48"x 42" x 18"
 Does not include lighting Qty 12



Curve Bar - Single: \$250.00
 48" arc, 42" h
 Does not include lighting Qty 12



Raised Curve (1) high: \$300.00
 48" arc, ### high
 Does not include lighting Qty 2



Raised Curve (2) high: \$500.00
 Raised Curve (3) high: \$700.00
 Each addition 40" h
 Does not include lighting Qty 2



Flat Bar - Double: \$300.00
 Flat Bar - Triple: \$400.00
 Additional Flat Bars: \$100 ea.
 Does not include lighting



Curve Bar - Double: \$500.00
 48" arc, 42" h
 Does not include lighting



Curve Bar - Corner: \$400.00
 48" arc, 8' l, 42" h
 Does not include lighting



Horseshoe Bar: \$600.00
 48" deep. 12' l, 42" h
 Does not include lighting



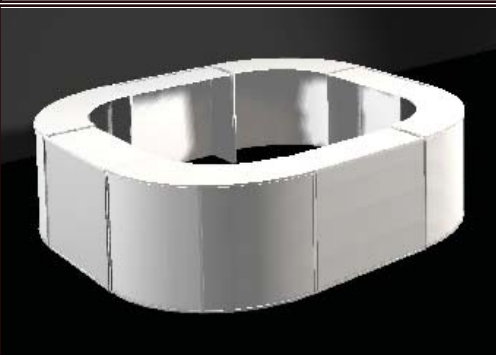
Horseshoe Bar - Extended \$700.00
 48" deep. 16' l, 42" h
 Does not include lighting



Horseshoe - Extended, With Raised ends, (1) high: \$800.00
 48" deep. 16' l, 42" h, ends ###
 Does not include lighting



Circle Bar: \$800.00
 8' OD, 4' ID, 42" h
 Does not include lighting

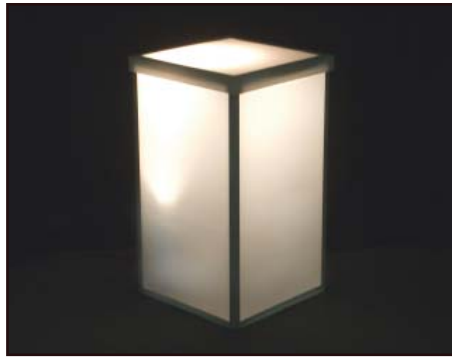


Circle Square Bar: \$1400.00
 12'x12' x 42"- can be expanded
 Does not include lighting

LightBoX Stock Rentals



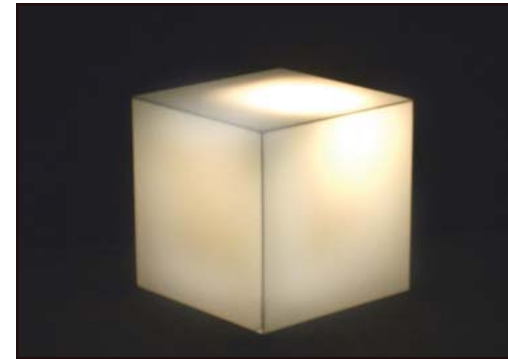
Columns, 12' Bevelled: ea. \$200.00
20"x20"x12'
Does not include lighting Qty 14



Columns 6': ea \$125.00
20"x20"x3'
Does not include lighting Qty 6



Columns, 3': ea. \$75.00
20"x20"x6'
Does not include lighting Qty 6



Cubes, set 3: \$100.00
18", 20", 22"
Lighting \$15/ea. Qty 4 sets



Flutter Flame Torches: ea. 8' \$300.00
11' \$350.00
Does not include lighting Qty 6
Requires additional AC



Columns Curved, 13': ea. \$500.00
Columns, Curved, 15': ea. \$600.00
Does not include lighting Qty 2 ea.



Kites Various, \$50.00 - \$100.00
Does not include lighting



Cones: ea. \$150.00
14' h X 4' d
Includes Support Hardware
Does not include lighting Qty 6



Lycra Circle 10' \$150.00
Circle Only: ea. \$190.00
Including Hanging Support: \$190.00
Does not include lighting Qty 3



Columns 12' (2) & Kites,: \$500.00
Additional 12': \$300.00
Does not include lighting



Column 12'(2) & Curved Bars (2) \$800.00
Does not include lighting

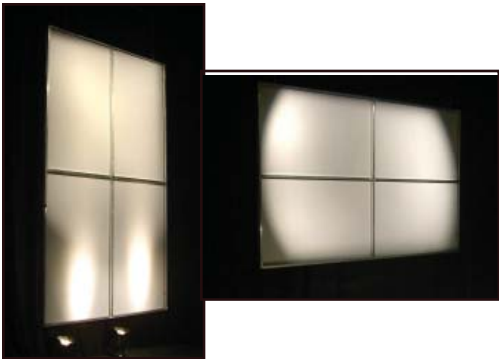


Columns 12' (2) & Flat Bars (3): \$800.00
Does not include lighting

LightBoX Stock Rentals



Panel 6'x10' Freestanding \$220.00
Includes Support Hardware
Panel Only: \$200
Does not include lighting Qty 10



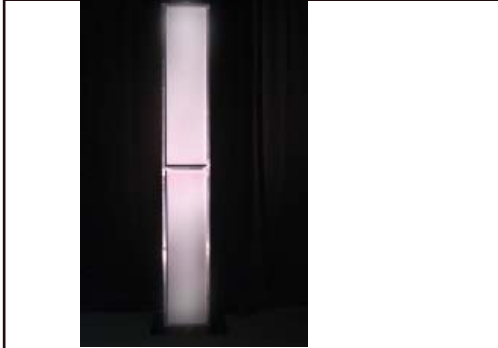
Panel 6'x10' hanging: \$240.00
Includes Support Hardware
Does not include lighting



Panel 7'x15" \$50.00
 Incl. Freestanding hardware: \$70.00
 Incl. Hanging Support hardware: \$90.00
Does not include lighting Qty 2



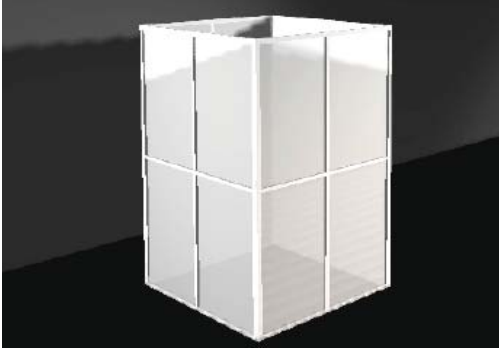
Panel 7'x30" \$70.00
 Incl. Freestanding hardware: \$90.00
 Incl. Hanging Support hardware: \$110.00
Does not include lighting Qty 10



Panel 8'6"x15" \$60.00
 Incl. Freestanding hardware: \$80.00
 Incl. Hanging Support hardware: \$100.00
Does not include lighting Qty 2



Panel 8'x30" \$80.00
 Incl. Freestanding hardware: \$100.00
 Incl. Hanging Support hardware: \$120.00
Does not include lighting Qty 10



Panel 6x10 - Box 360: \$800.00
Includes Support Hardware
Does not include lighting



Panel 8'6x30 - Box 360: \$400.00
Includes Support Hardware
Does not include lighting



Columns 12' (2) & Panel 6x10 \$500.00
Includes Support Hardware
Does not include lighting



Columns 12'(2), Panel 6x10, Flat Bar \$650.00
Includes Support Hardware
Does not include lighting



Panels 6x10 (2), Curved Bars (2) \$800.00
Includes Support Hardware
Does not include lighting



Panels 6x10 (2), Horseshoe \$900.00
Includes Support Hardware
Does not include lighting

LightBoX *Stock Rentals*



Panel 6x10 Hanging, Extended
Horseshoe \$1000.00
Includes Support Hardware
Does not include lighting



Panel 6x10 Hanging, Extended
Horseshoe Raised Ends \$1100.00
Includes Support Hardware
Does not include lighting



Panel Set, 16'x10: \$1000.00
Includes Support Hardware.
Medallion Additional.
Does not include lighting



Panel Set, 16'x10 & Torches 6' 2): \$1600.00
Includes Support Hardware
Medallion Additional.

More to Come...